



February

February rounds were below last year monthly actuals by -3,683 rounds (*this includes Member, Guests, Public, and Comp player types).

YTD Golf rounds for July through February were below last year (by -7,883 rounds or -4.4 %). Year-end estimate is 278,742 total rounds.

For YTD July through February Member rounds were Down by -6,300, while Public Rounds were Up by 500 from prior year

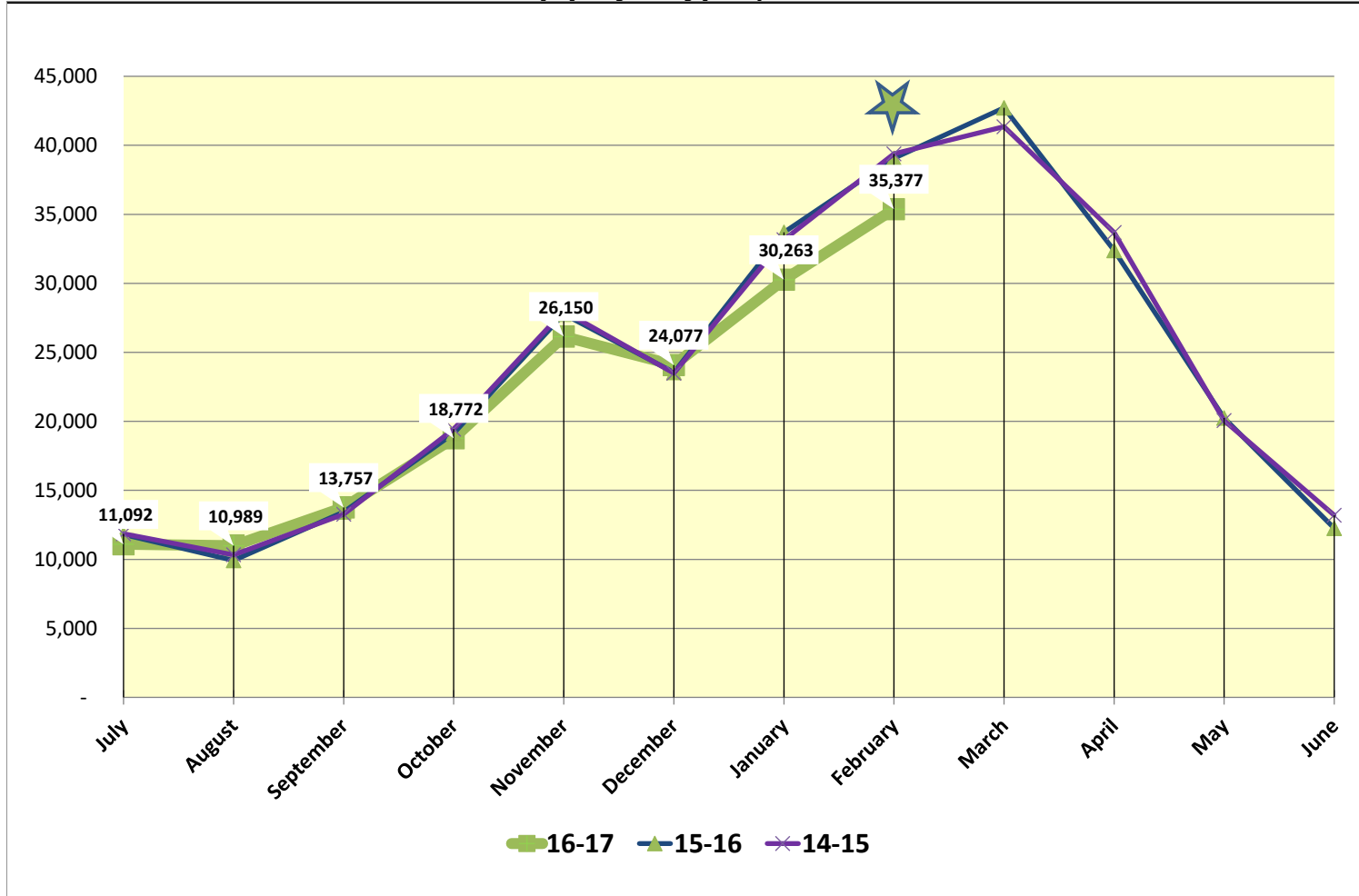
July through February YTD PRIME TIME Rounds are under Prior Year by -7,364

For July through February YTD, Annual Card sales are down by -1 cards vs. prior year. Kachina Card sales are up by 71 cards vs. prior year, and Coyote Card sales are down by -12 cards vs. prior year.

For July through February YTD in FY 2017, there were 870 driving range keys sold. This key provides a discount on purchases of buckets of balls.

See charts that follow for further details

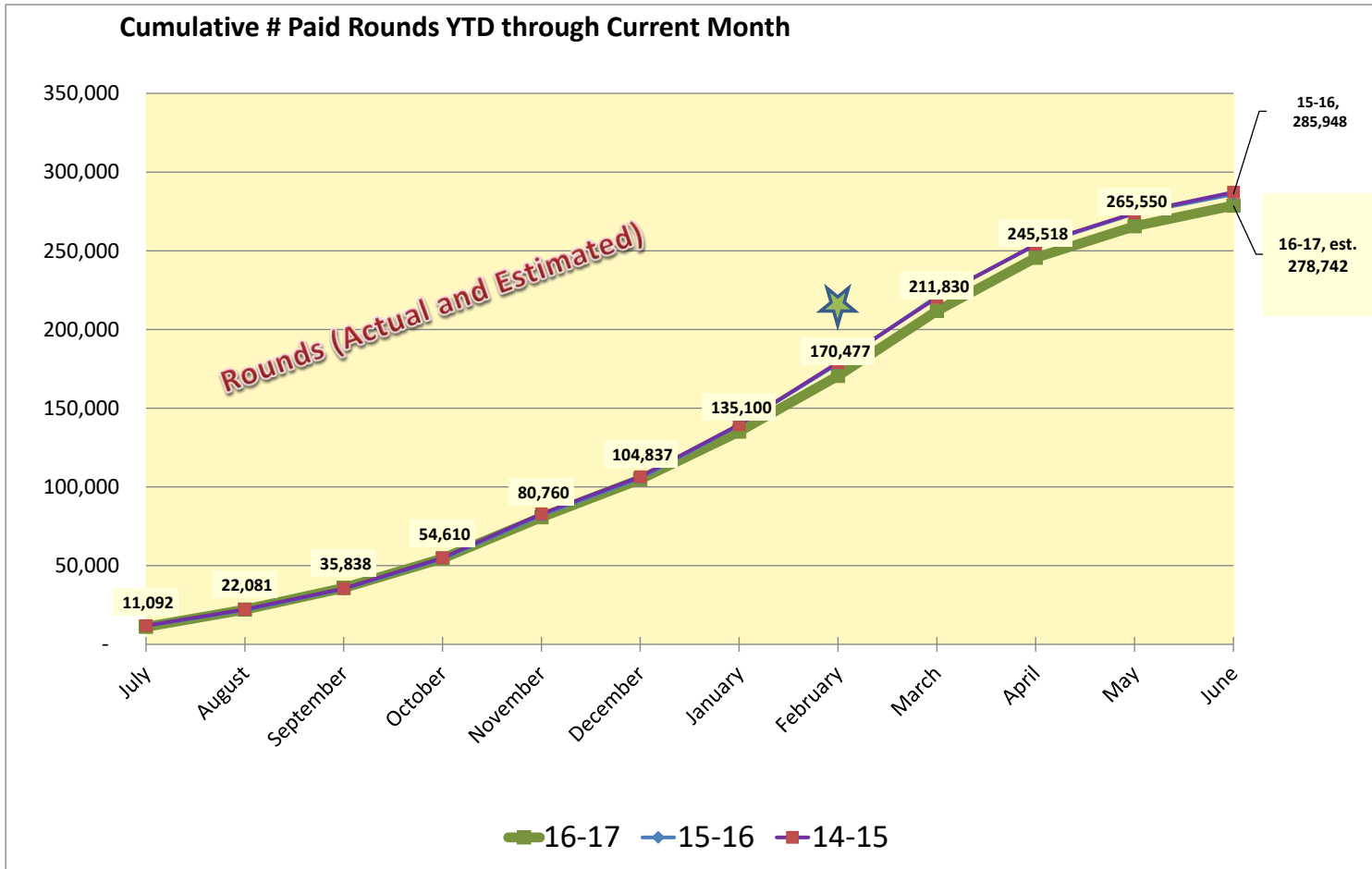
February rounds were below last year monthly actuals by -3,683 rounds (*this includes Member, Guests, Public, and Comp player types).



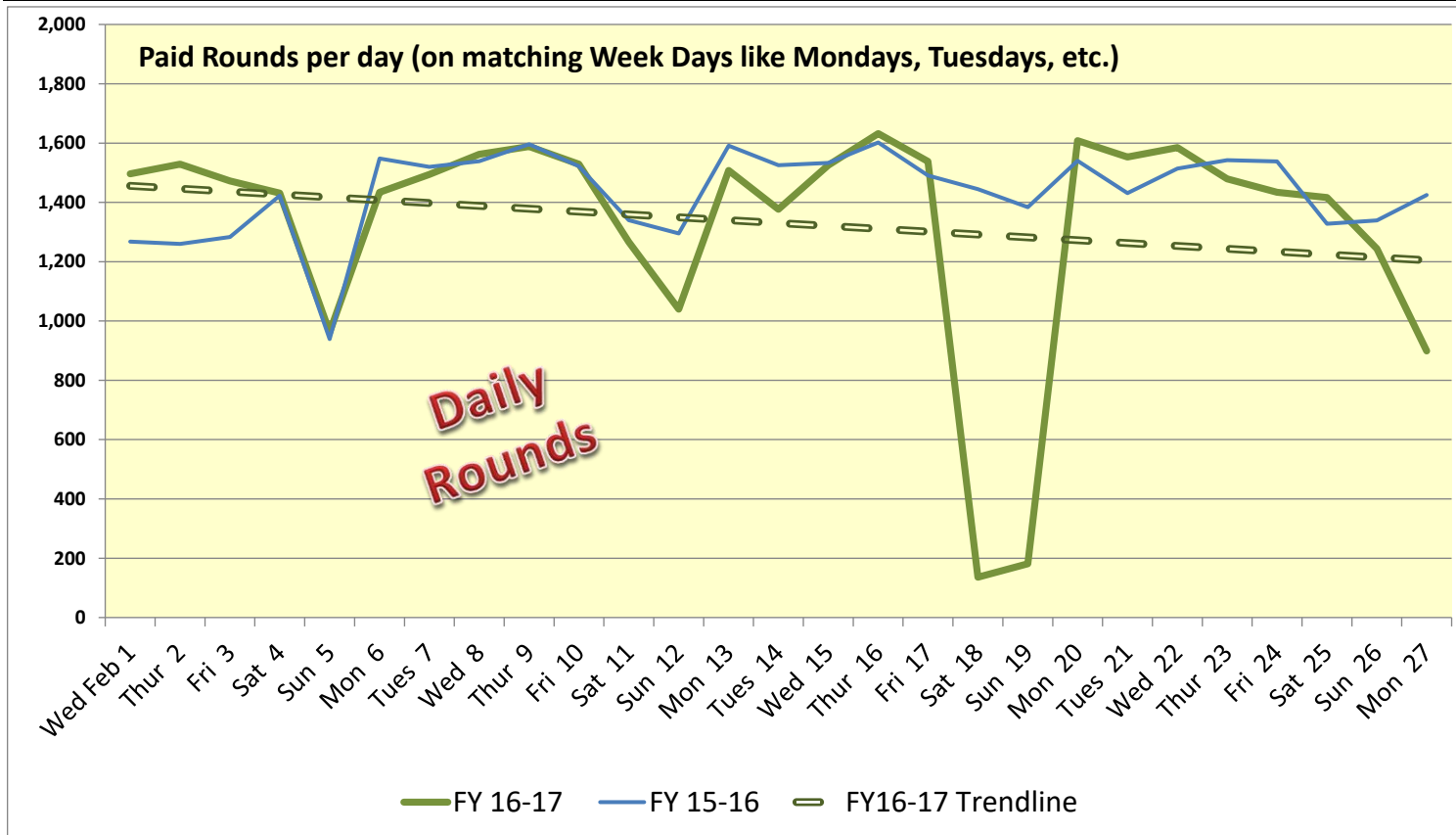
**Starting In November 2016, the round types will show changes from renaming of Play Types to "Member", "Guest", and "Public". This report uses these labels where appropriate.*

YTD Golf rounds for July through February were below last year (by -7,883 rounds or -4.4 %). Year-end estimate is 278,742 total rounds.

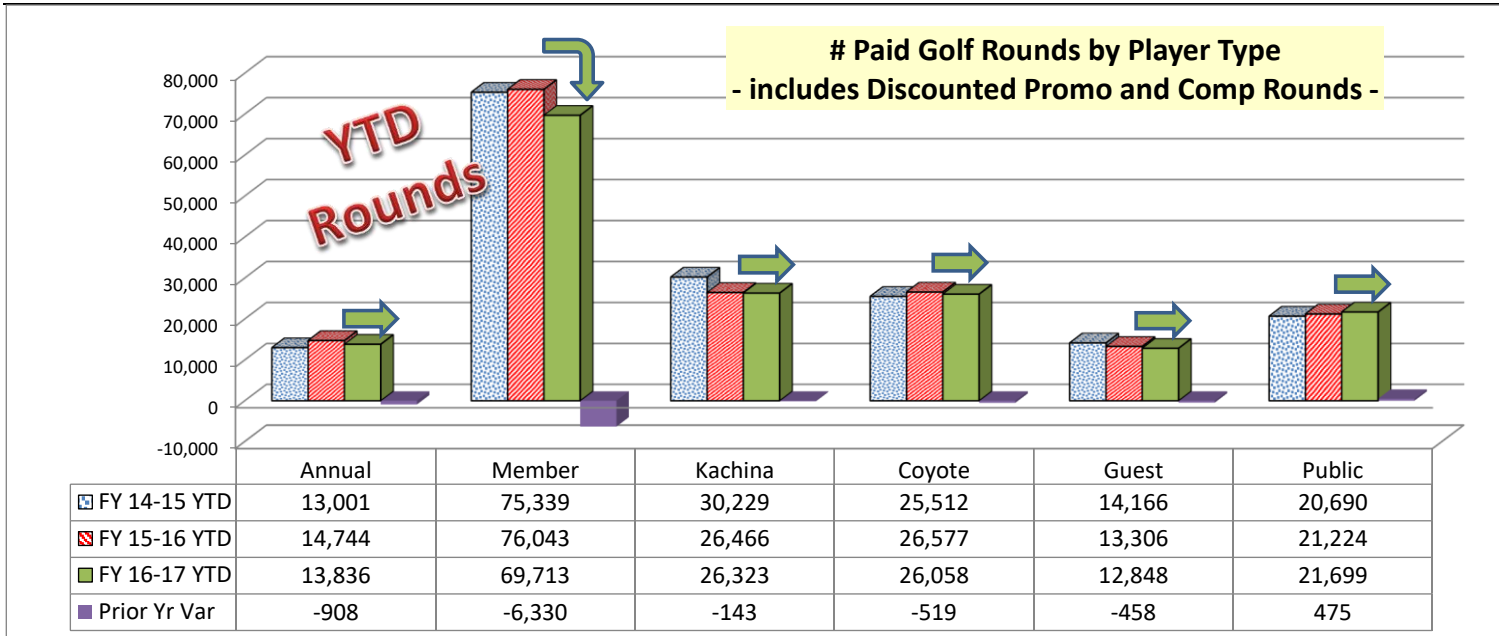
YTD Regulation courses were up by 40 Rounds vs. prior year. Executive courses were down by -7,923 rounds vs. prior year. Net Variance is down -7883 Rounds



For Feb FY 16-17 Daily Maximum was 1632 and Average was 1296 rounds per day. For Feb FY 15-16 Daily Maximum was 1602 and Average was 1379 rounds per day.

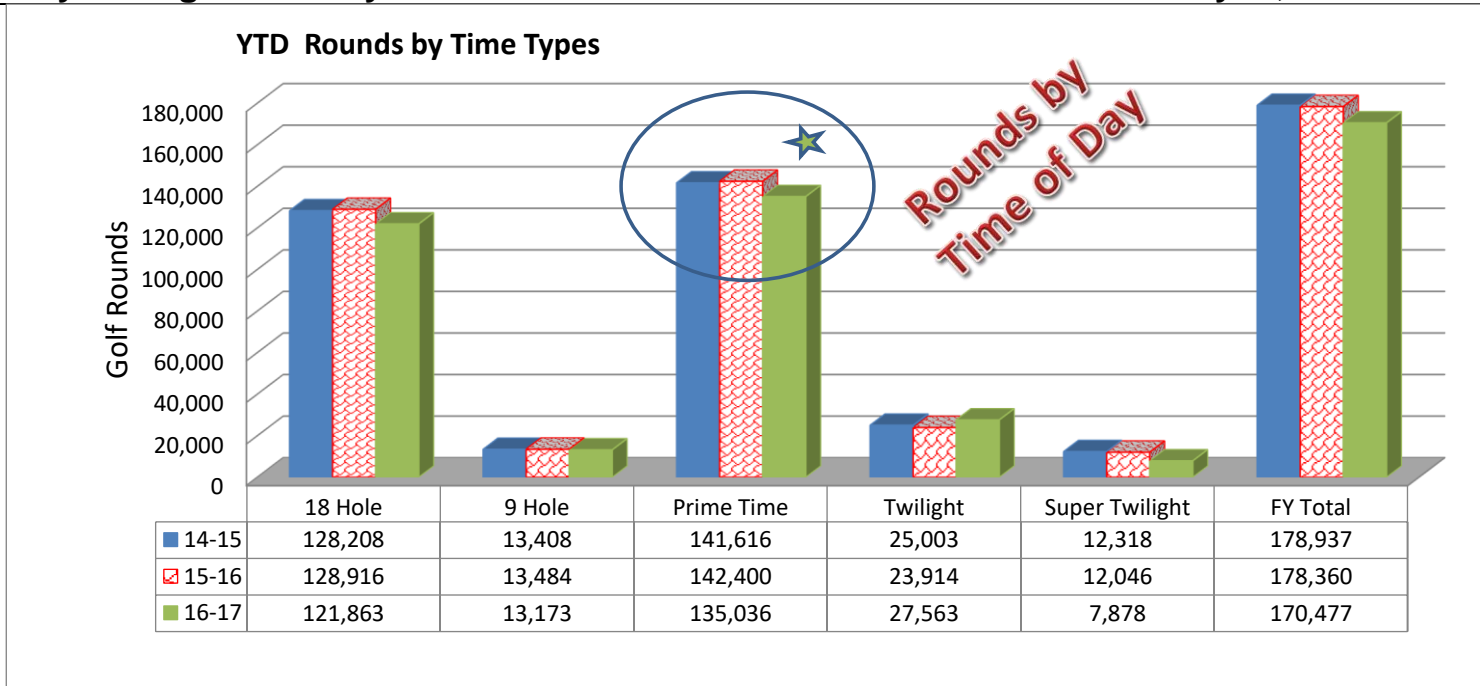


For YTD July through February Member rounds were Down by -6,300, while Public Rounds were Up by 500 from prior year



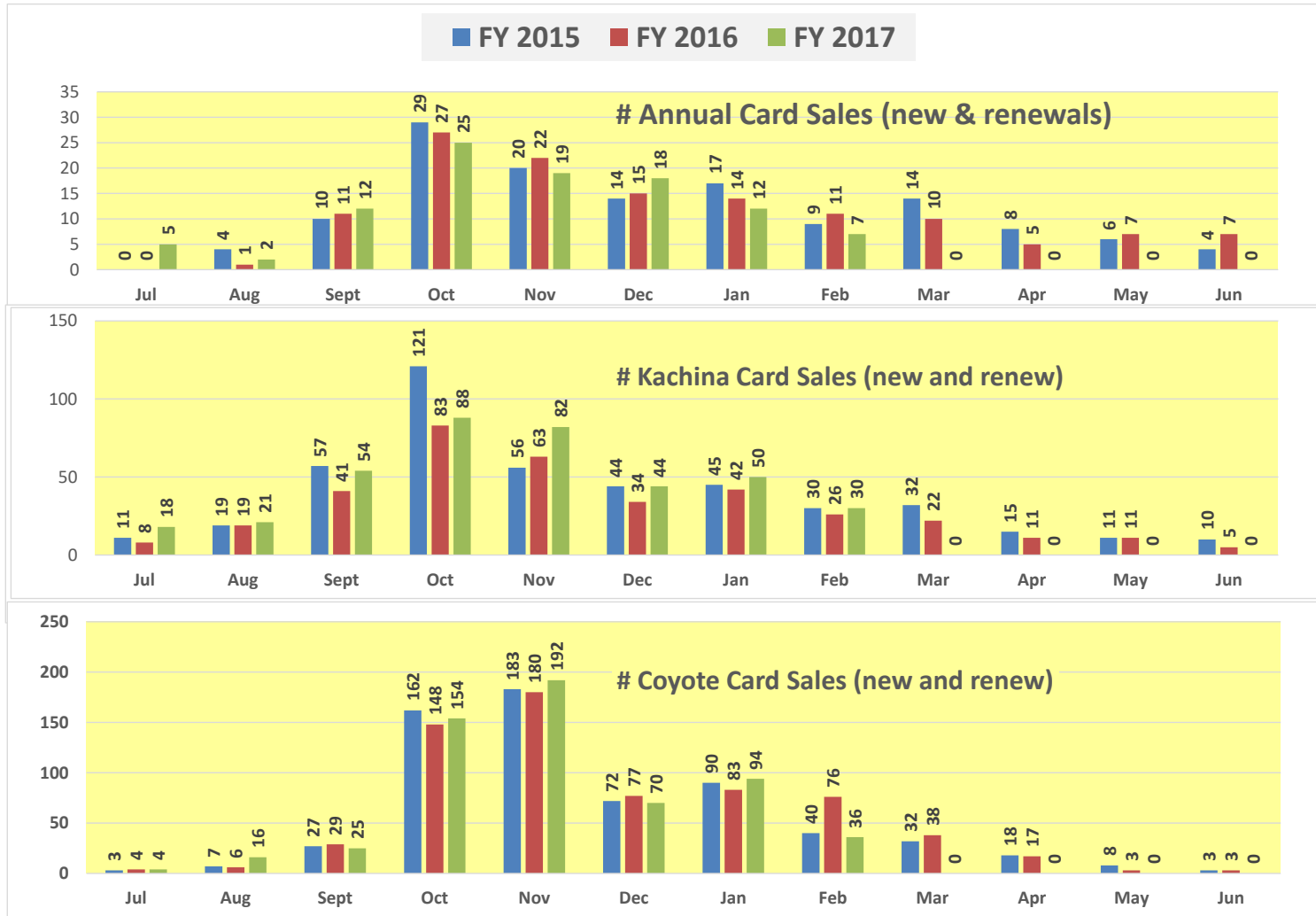
| February | Annual | Member | Kachina | Coyote | Guest | Public |
|--------------------------------|--------|--------|---------|--------|-------|--------|
| 14-15 Feb | 1,812 | 18,071 | 4,507 | 5,203 | 4,817 | 4,979 |
| 15-16 Feb | 2,080 | 18,370 | 3,858 | 5,385 | 4,433 | 4,934 |
| 16-17 Feb | 1,791 | 15,708 | 3,997 | 5,059 | 4,204 | 4,618 |
| Month Var from Prior Yr | -289 | -2,662 | 139 | -326 | -229 | -316 |

July through February YTD PRIME TIME Rounds are under Prior Year by -7,364



** Prime time rounds are down from prior year. ...Most likely due to cold weather in mornings*

For July through February YTD, Annual Card sales are down by -1 cards vs. prior year. Kachina Card sales are up by 71 cards vs. prior year, and Coyote Card sales are down by -12 cards vs. prior year.



For July through February YTD in FY 2017, there were 870 driving range keys sold. This key provides a discount on purchases of buckets of balls.

